

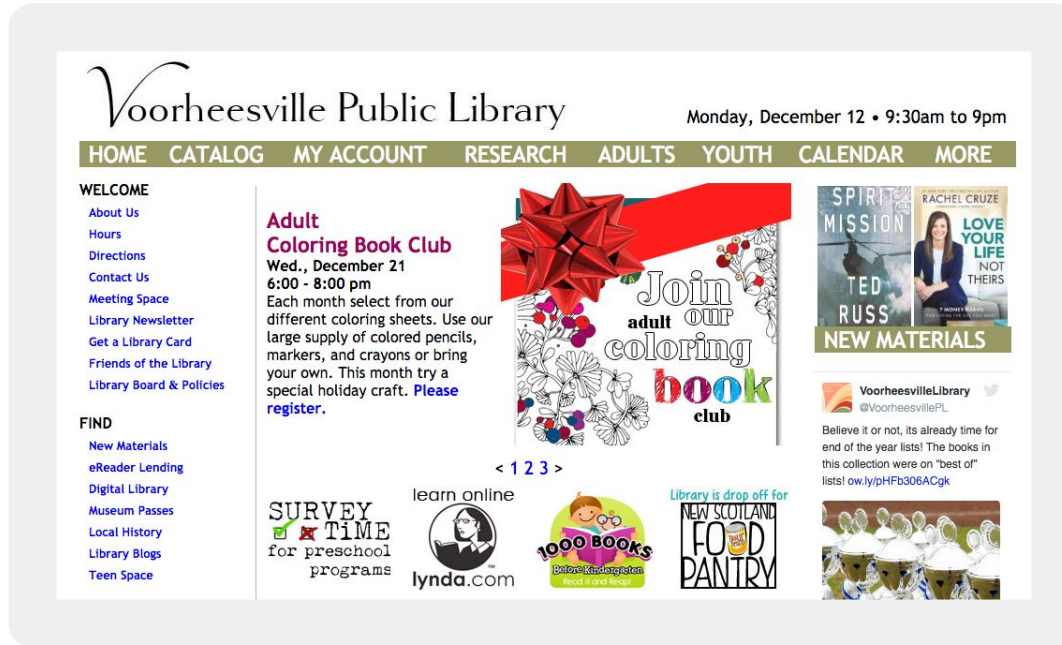
Voorheesville Public Library Information Architecture & Interactive Redesign

Kaitlin Kehnemuyi / Ian Knight / Youn Lee / Hui Zhao

December 13, 2016

Project Goal

To better serve the needs of their patrons, Voorheesville Public Library commissioned an information architecture study and responsive redesign of their website in order to facilitate a user-centered website



Understanding Users

In order to update to the Voorheesville Public Library website, we conducted user research regarding library use and library website use by several representative populations, to better understand the behavior and needs of the users of the Voorheesville Library's website.

Four demographics: Young professionals, Seniors, Parents/Caregivers, Middle Aged without Children

Methods of data gathering

Surveys: We developed a set of questions to better comprehend library website use by different demographics. We reached out to 10 people in each demographic group, focusing on current and past library users.

Interviews: Eight interviews were conducted in order to gain a deeper understanding of how patrons interact with library websites and what information they are looking for when they visit a library website.

Personas

From the data gathered in the user research, personas were created representing an archetype of each user group, which guided our approach going forward

Susan Wallace

68 Years Old
Retired College Professor
Two Children, Three Grandchildren
Has Lived in Voorheesville 27 Years



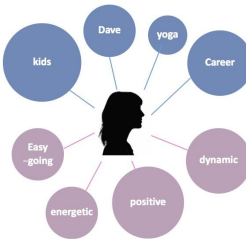
- Susan lives with her husband in Voorheesville, NY
- She has a Masters Degree, and taught at a small local college until her retirement
- She is not much of a socialite, but she does enjoy being involved in her community
- She enjoys using the local library for pleasure reading
- She visits the library once or twice a month, sometimes with her husband, who also enjoys using the library
- She sometimes attends live readings, and is interested in knowing more about local events
- She is not very active on social media, but enjoys keeping up with friends and family online
- She mostly uses the library website to look up hours of operation, and occasionally to manage her holdings

Eileen Gillespie



Age: 35
Stay-at-home mom
Future freelance graphic designer
Married with two kids (Eric and Olivia)
Lives in Voorheesville, NY

"Life is a series of natural and spontaneous changes and I love to face those changes."



Eileen Gillespie is a mother of two who lives in Voorheesville, NY. She is from Bethesda, MD and graduated from MICA majoring in graphic design. She met her husband, Dave, while working in New York City as a graphic designer. When Eric turned two years old, Dave was given a career opportunity in Albany, and the couple decided to move to upstate New York, hoping this will have more relaxed life, and she decided to take a break from her career. Now she's a mother of two (Eric 5, Olivia 2).

Eileen does Yoga every morning. Yoga class is the only time solely for her. In the afternoon she has been preparing to go back to her career as a graphic designer. Since her baby is still young, she's considering finding a work at home situation as a freelance graphic designer.

LEIGH WEBB

-Age: 36
-Married to Jane, no kids
-Occupation: Social Worker
-Family Oriented



Leigh and her wife, Jane, recently returned to Upstate New York to be closer to her family. She felt like she was missing her niece and nephew's childhood and didn't want her them to grow out without knowing her and Jane. Her parents are also getting older, and she was starting to realize that they needed help with everyday chores.

Before moving back they had been living in Nashville, where she really enjoyed the local music scene. She loves all forms of entertainment, from books, to tv, to movies to podcasts, she likes staying up to date. She likes

to use media to help herself unwind after work. Her job as a social worker who works with senior citizens can be rewarding and draining at the same time. It is nice to come home at the end of the day and just watch tv or read a book to decompress.

While missing her friends back in Nashville, she also still feels connected with them through Facebook, Twitter and Instagram. They share updates, pictures and suggestions to articles, bands and books.

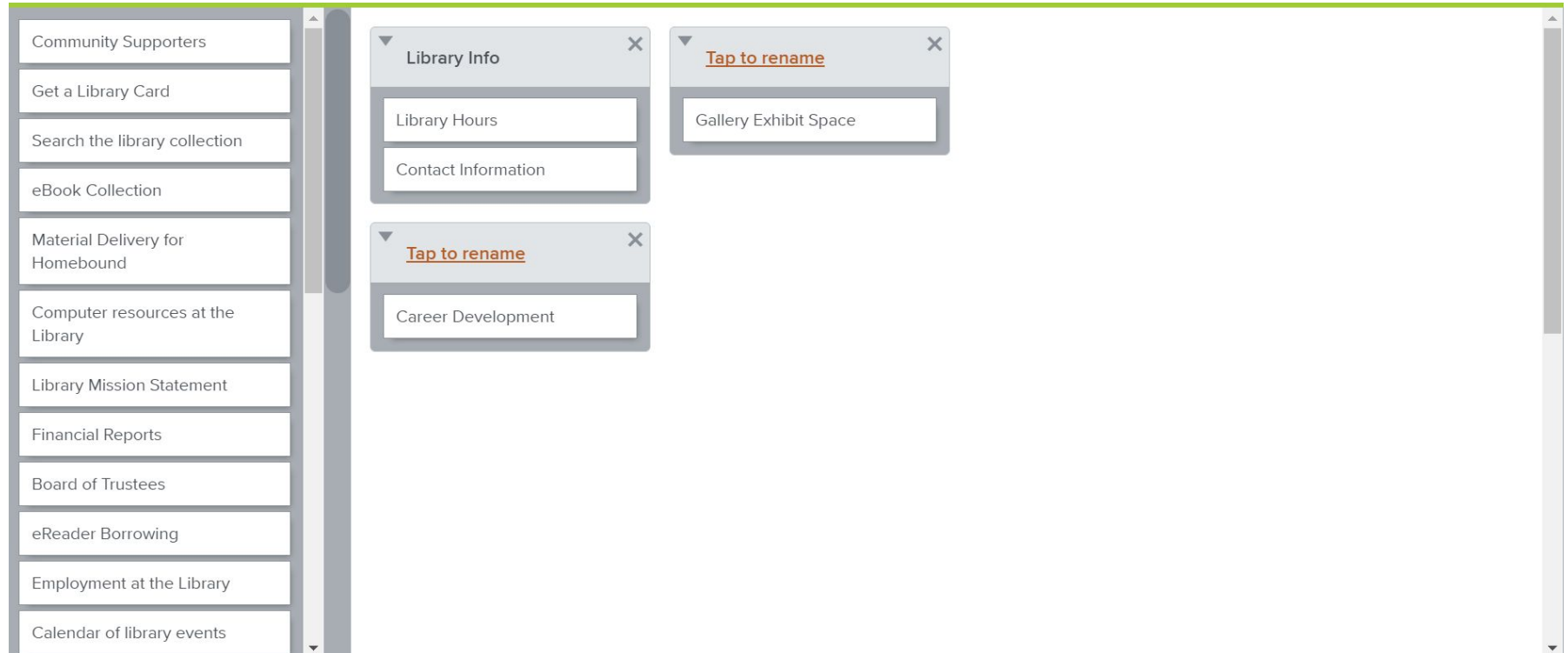
Card Sorting Preparation

We then took an inventory of the existing site content and reduced it to 33 “cards” for user testing

CARDS	Detail	CARDS	Detail
1 Board of Trustees		18 Teen Programs	Teen Book Club, Teen programs
2 Financial Reports		19 Kids Programs	1000 Books Before Kindergarten, Book lists for children, Paws for Reading, Storytimes
3 Library Budget		20 Directions	Directions
4 Contact Information	Email the library, Staff directory	21 Meeting Room Booking	Community room
5 Library Hours	Hours	22 Featured Materials	New Materials, recommendation
6 Get a Library Card	Library card, PIN number	23 eReader Borrowing	eReader Lending
7 How to Borrow	Interlibrary loan, Circulation rules, Fines, Get email notices	24 eBook Collection	Overdrive digital collection
8 Community Supporters	(Friends of library)	25 Museum Passes	Museum Passes
9 Career Development	general career development	26 Local History & Archives	Archives and local history
10 Employment at the Library	jobs at the library	27 Library Blogs	Nimblefingers News Blog, Film Beat Blog, Winter Reading Club 2014
11 Computer resources at the Library	Public computers, Internet, Wi-Fi, Internet Use Policy	28 Search the library collection	Catalog
12 Library Newsletter	Email Newsletter signup	29 Access to Research Databases	Databases, Health care information, Magazine articles, Research DB
13 Library Mission Statement	Library Mission Statement	30 Plant Seed Sharing	
14 Material Delivery for Homebound	(Home book delivery)	31 Tax Forms	Tax Forms
15 Library YouTube Channel	Library Video, See What the Library Can do for You!(video)	32 Manage My Account	
16 Calendar of library events	Calendar of library events	33 Gallery Exhibit Space	Exhibit Space
17 Adult Programs	Thursday Afternoon Movies		

Card Sorting Testing

We asked eight users to sort these cards into natural categories and then name the categories.



Card Sorting Results

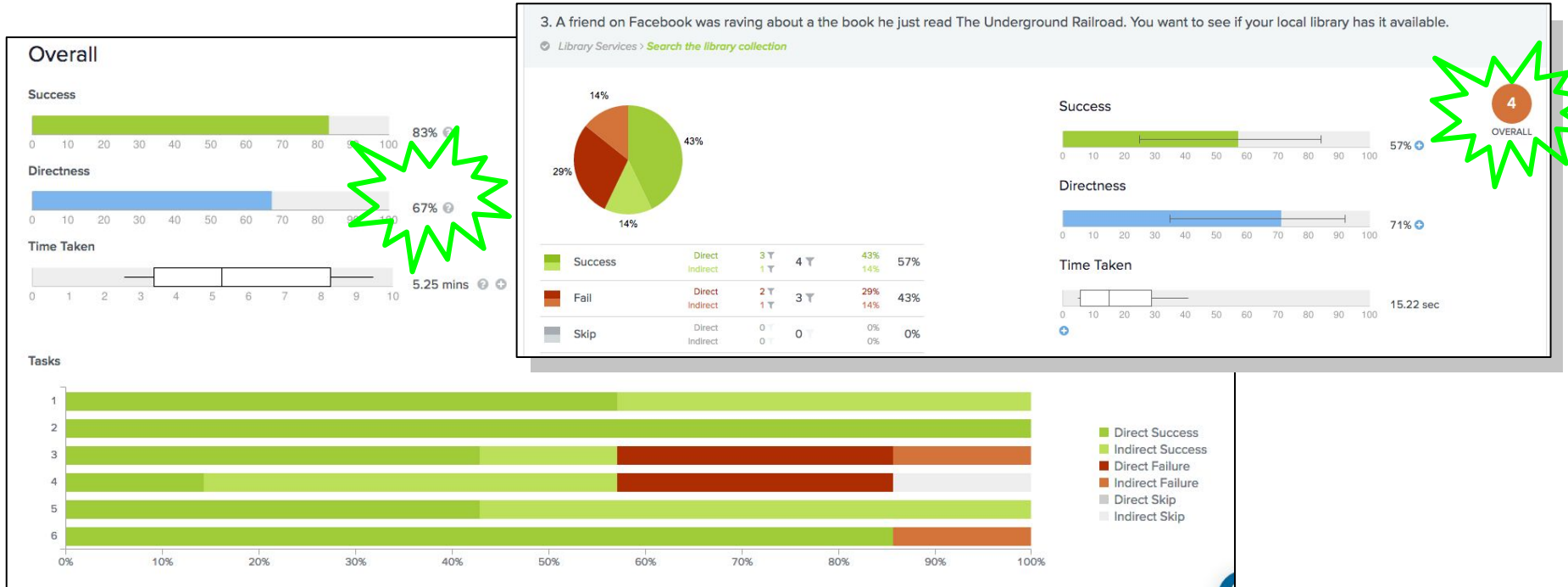
We analyzed the user results and derived six navigational categories for the site

Adult Programs																																	
100	Teen Programs																																
100	100	Kids Programs																															
75	75	75	Calendar of library events																														
37	37	37	50	Library Newsletter																													
12	12	12	25	75	Library YouTube Channel																												
12	12	12	25	75	100	Library Blogs																											
0	0	0	0	0	25	25	eBook Collection																										
0	0	0	0	0	25	25	100	Search the library collection																									
0	0	0	0	0	12	12	75	75	eReader Borrowing																								
0	0	0	0	0	0	0	37	37	50	How to Borrow																							
0	0	0	0	0	12	12	62	62	50	75	Computer resources at the Library																						
0	0	0	0	0	12	12	62	62	50	62	62	Access to Research Databases																					
12	12	12	12	25	25	25	62	62	50	25	50	62	Featured Materials																				
0	0	0	12	0	25	25	50	50	37	25	37	50	50	Local History & Archives																			
0	0	0	25	12	12	12	0	0	12	25	12	0	0	25	Contact Information																		
0	0	0	25	12	12	12	0	0	12	37	25	0	0	12	87	Library Hours																	
0	0	0	25	12	12	12	0	0	12	37	25	0	0	12	87	100	Directions																
0	0	0	25	25	25	25	0	0	12	25	12	12	0	25	62	50	50	Library Mission Statement															
12	12	12	25	37	25	25	0	0	0	0	0	0	0	12	50	37	37	50	Employment at the Library														
25	25	25	25	37	25	25	0	0	0	0	0	0	0	0	25	25	25	37	62	Community Supporters													
0	0	0	0	25	25	25	0	0	0	0	0	0	0	12	25	12	12	37	50	62	Board of Trustees												
0	0	0	0	25	25	25	0	0	0	0	0	0	0	12	12	0	0	25	50	37	75	Library Budget											
0	0	0	0	25	25	25	0	0	0	12	12	0	0	0	12	12	12	37	37	62	87	Financial Reports											
0	0	0	0	12	12	12	0	0	0	0	0	12	12	25	12	0	0	12	25	12	50	75	62	Tax Forms									
12	12	12	12	12	12	12	12	12	12	37	37	12	25	12	25	25	25	12	25	25	12	12	25	Meeting Room Booking									
25	25	25	25	12	12	12	0	0	25	25	12	12	0	12	12	12	12	25	0	12	0	0	12	50	Gallery Exhibit Space								
12	12	12	12	0	0	0	0	0	25	25	12	0	0	12	12	25	25	12	0	0	0	12	12	37	75	Museum Passes							
62	62	62	50	25	12	12	0	0	0	0	0	0	0	12	0	0	0	12	25	0	0	0	12	37	37	Plant Seed Sharing							
25	25	25	25	25	12	12	37	37	50	25	37	25	25	12	0	0	0	12	25	0	0	0	0	37	25	25	37	Material Delivery for Homebound					
25	25	25	25	25	12	12	12	12	12	12	0	0	25	25	12	25	25	25	50	25	0	12	12	25	12	0	12	37	25	Career Development			
0	0	0	0	0	0	0	12	12	25	75	50	37	12	12	25	37	37	25	0	0	0	12	0	12	0	37	25	25	0	12	0	Get a Library Card	
0	0	0	0	0	0	0	25	25	12	37	25	25	12	12	0	12	12	0	0	12	12	25	12	25	0	12	0	12	0	62	Manage My Account		

What's New	Library Services	Programs & Events
Featured Materials	How to Borrow	Calendar of library events
Library Newsletter	Get a Library Card	Adult Programs
Library Blogs	Manage My Account	Teen Programs
Library YouTube Channel	Search the library collection	Kids Programs
	eBook Collection	Career Development
	Computer resources at the Library	Plant Seed Sharing
	eReader Borrowing	Museum Passes
	Material Delivery for Homebound	Gallery Exhibit Space
	Meeting Room Booking	
	Free Tax forms	
Research resources	About Us	Visit Library
Local History & Archives	Library Mission Statement	Contact Information
Access to Research Databases	Community Supporters	Library Hours
	Board of Trustees	Directions
	Financial Reports	
	Library Budget	
	Employment at the Library	

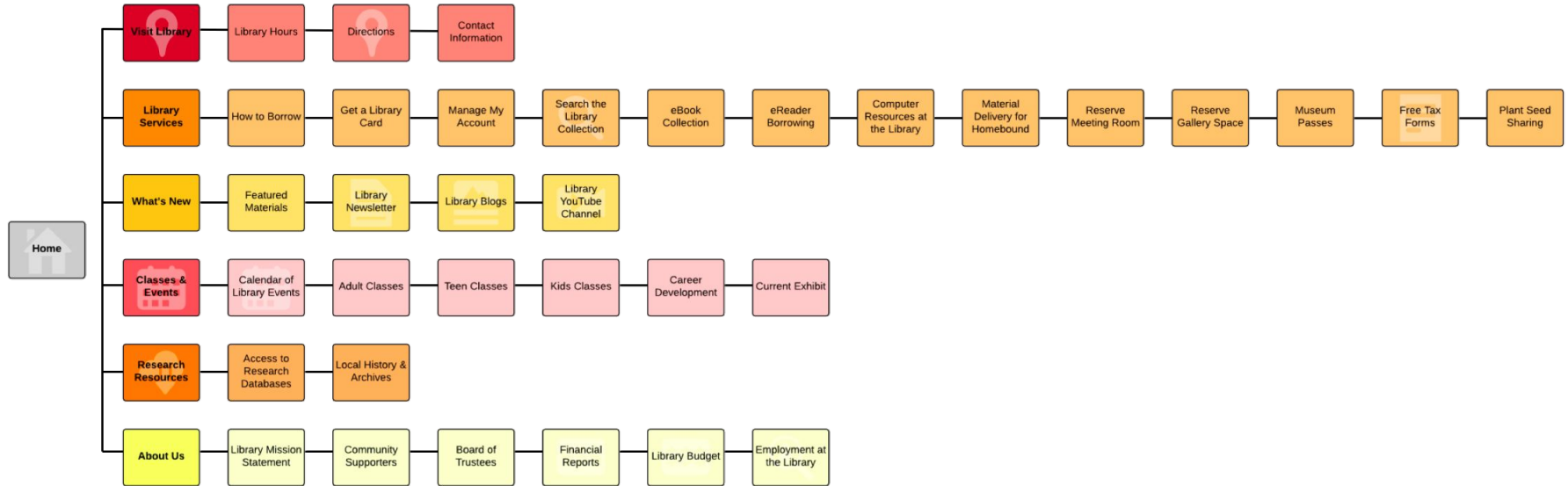
Treejack Testing

Based on the cardsorting, we created a menu tree for Treejack testing. However, when we conducted Treejack tests with seven participants, we found that users still failed to associate some labels with actual contents.



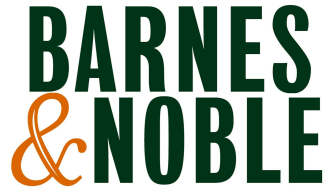
Proposed Site Map

With the Treejack results and additional adjustments, a new site map was created.



Competitive Analysis

We also compared five relevant websites – four other library websites and one bookseller website



DarienLibrary



Competitive Analysis

Criteria we used:

- What should be on the front page?
- How is programming promoted?
- How do they advertise new releases?
- How can patrons access online resources?
- How is searching the catalog done?

Takeaways:

1. Location and hours should be prominent.
2. Events and calendars draw users to the physical location
3. Categorize programming by theme and age groups
4. Newly released categorized in 'New', or 'Latest'
5. Offer entry points that relate to the type of resource
6. Visual separation is important
7. The search bar should be easy to find

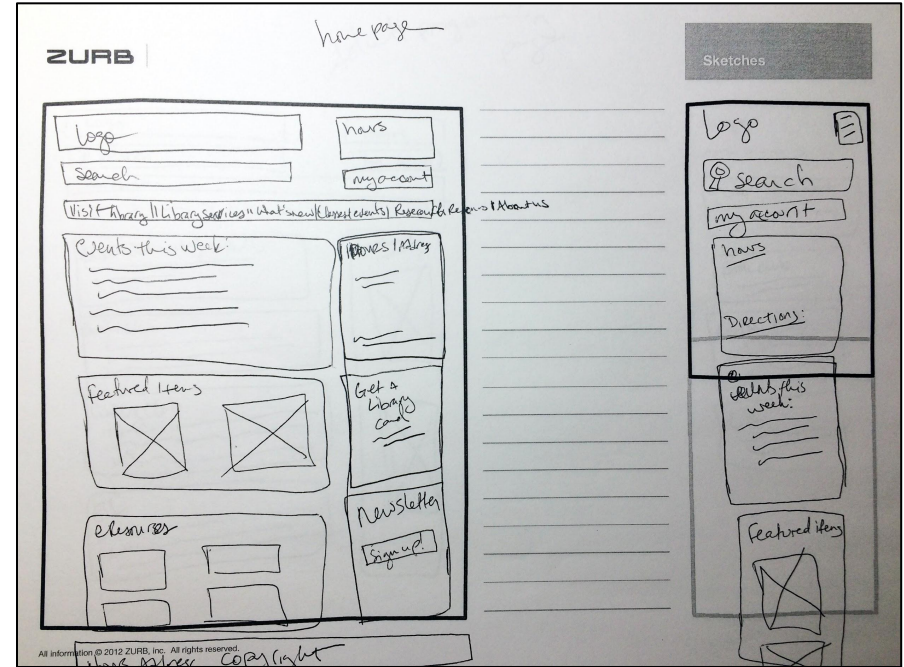
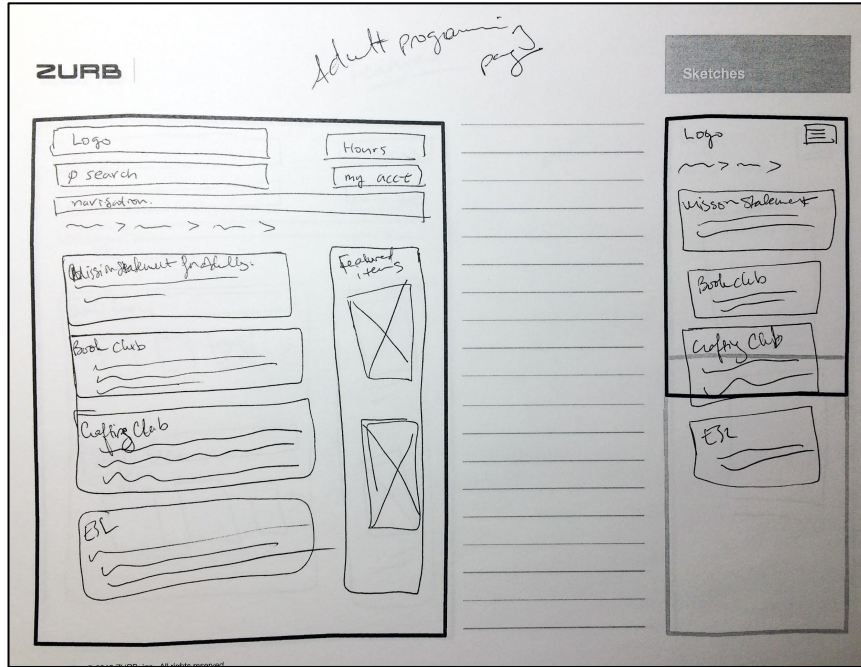
Site Design

Based on what we learned we started sketching some ideas... and throwing some away



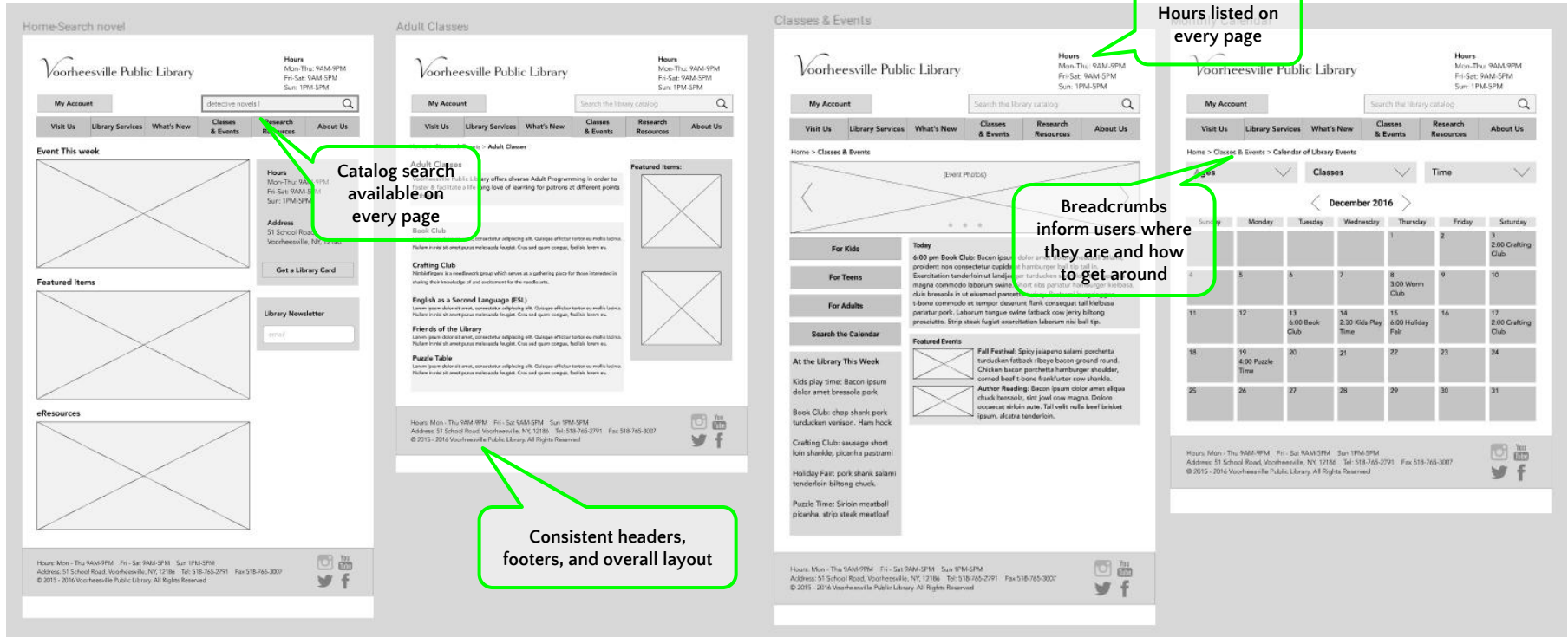
Paper Prototype

We used our sketches to come up with a paper prototype, which we tested on eight more users



Desktop Wireframe Prototype

With some final modifications, we put together a wireframe prototypes. These final prototypes cover both desktop and mobile users.



Mobile Wireframe Prototype

